

















Indesit





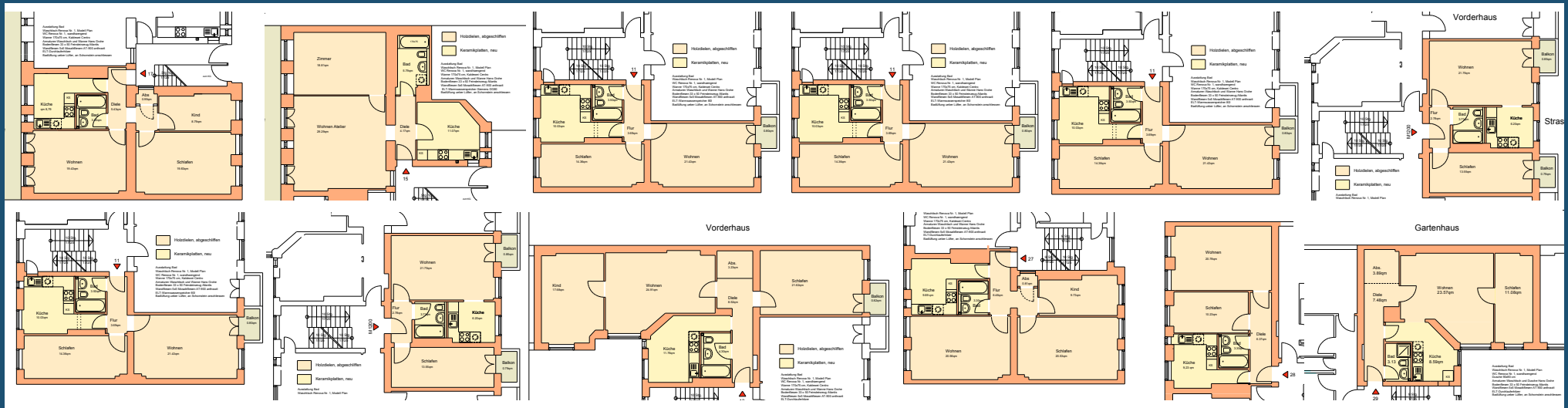




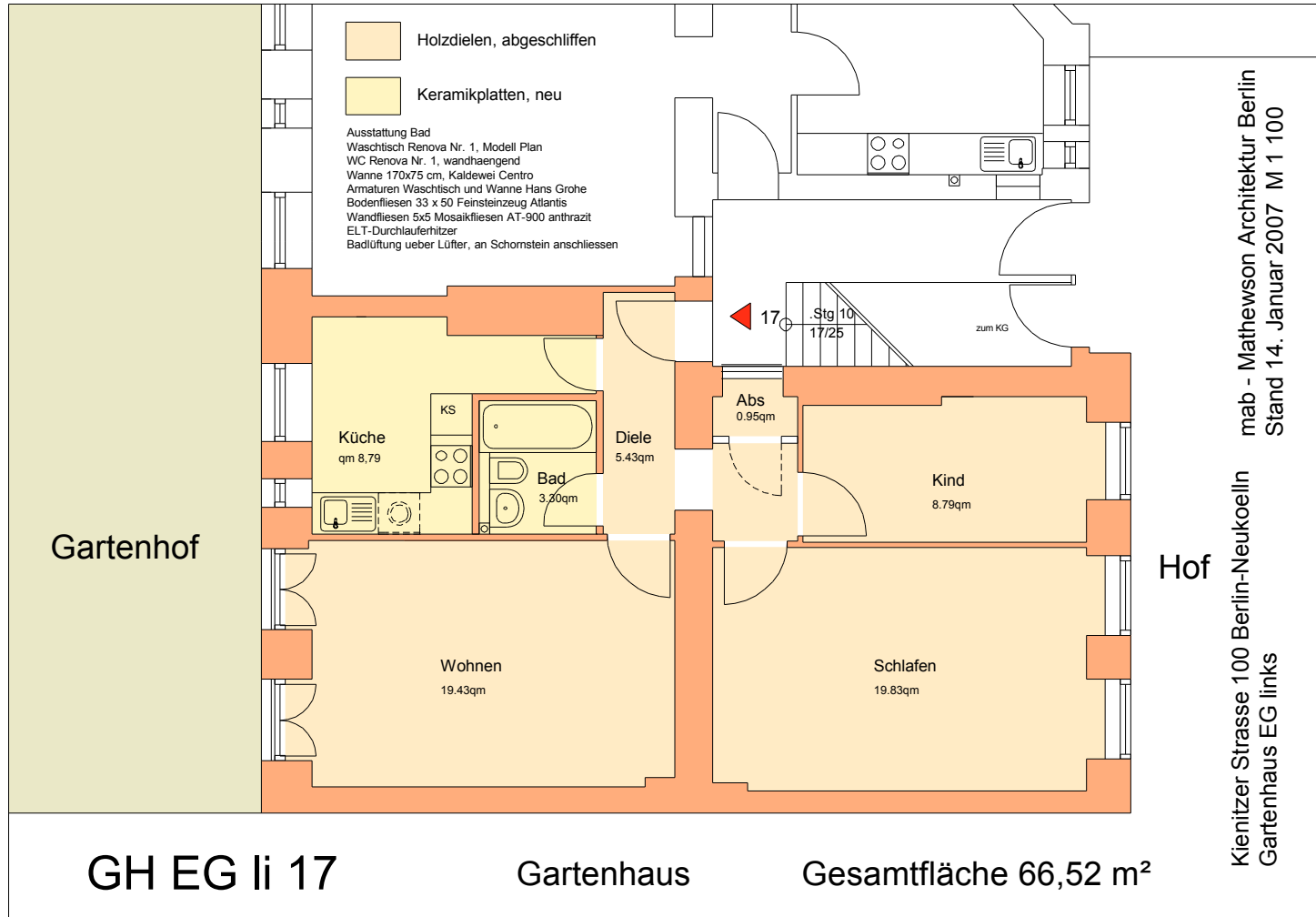


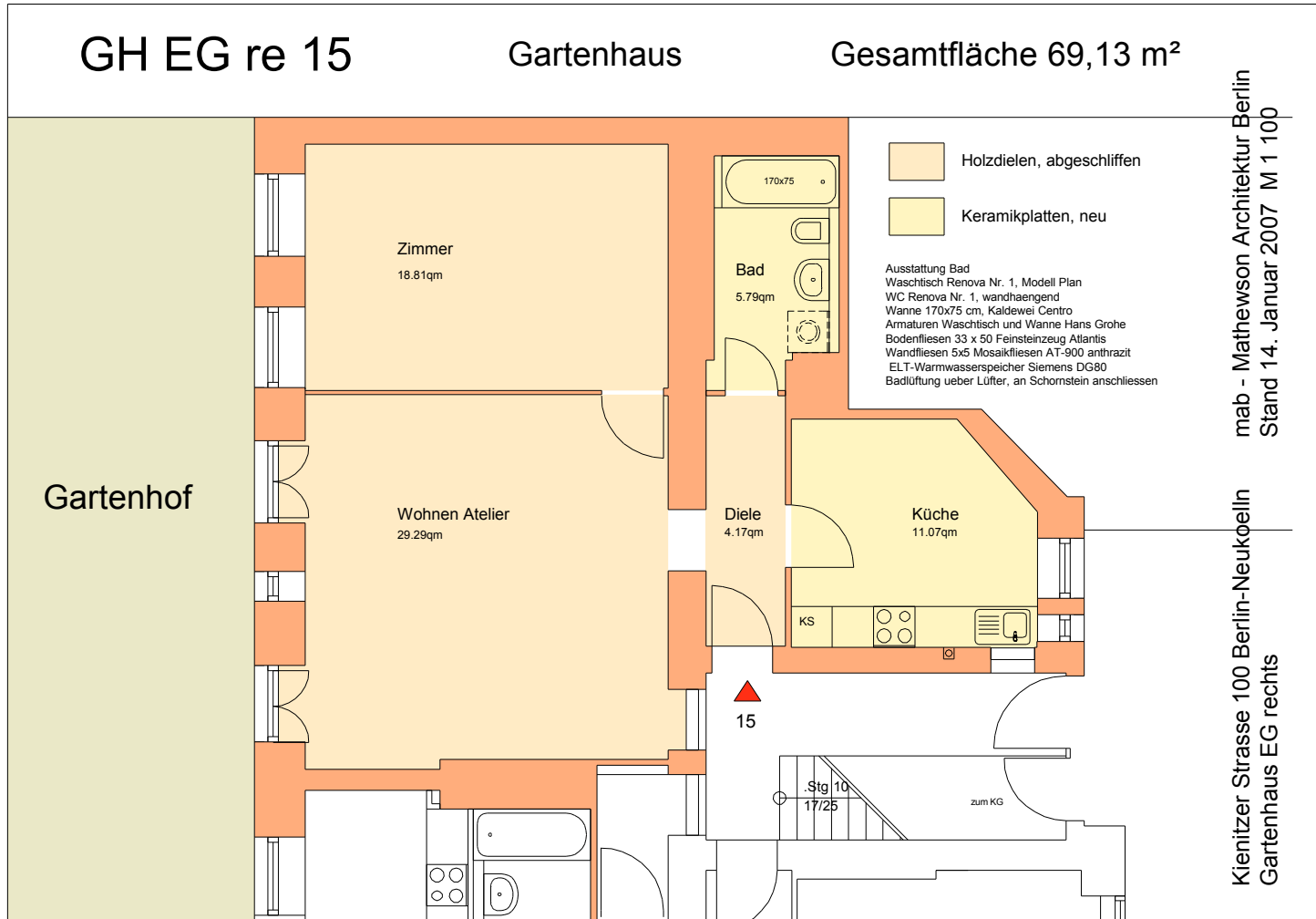


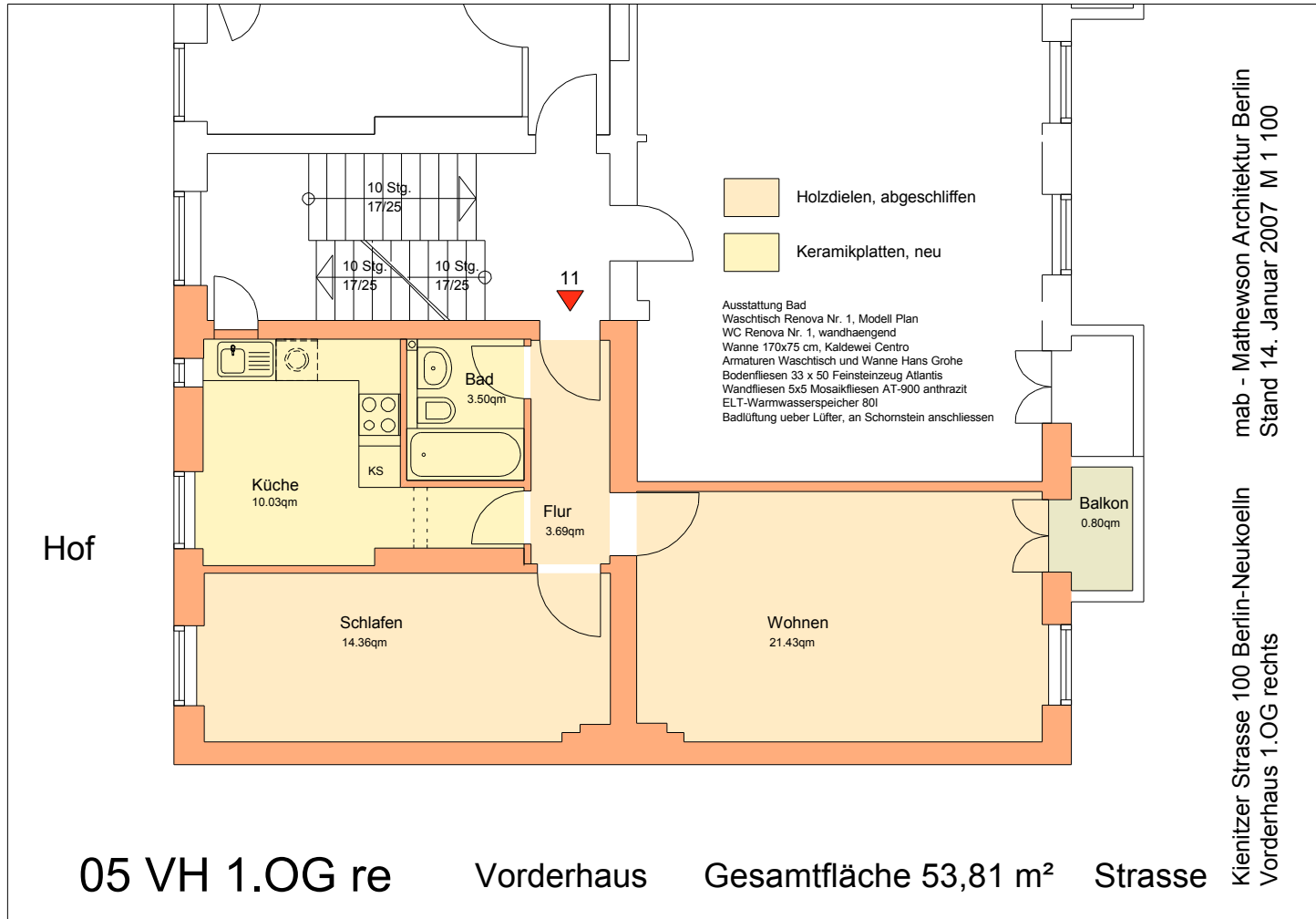


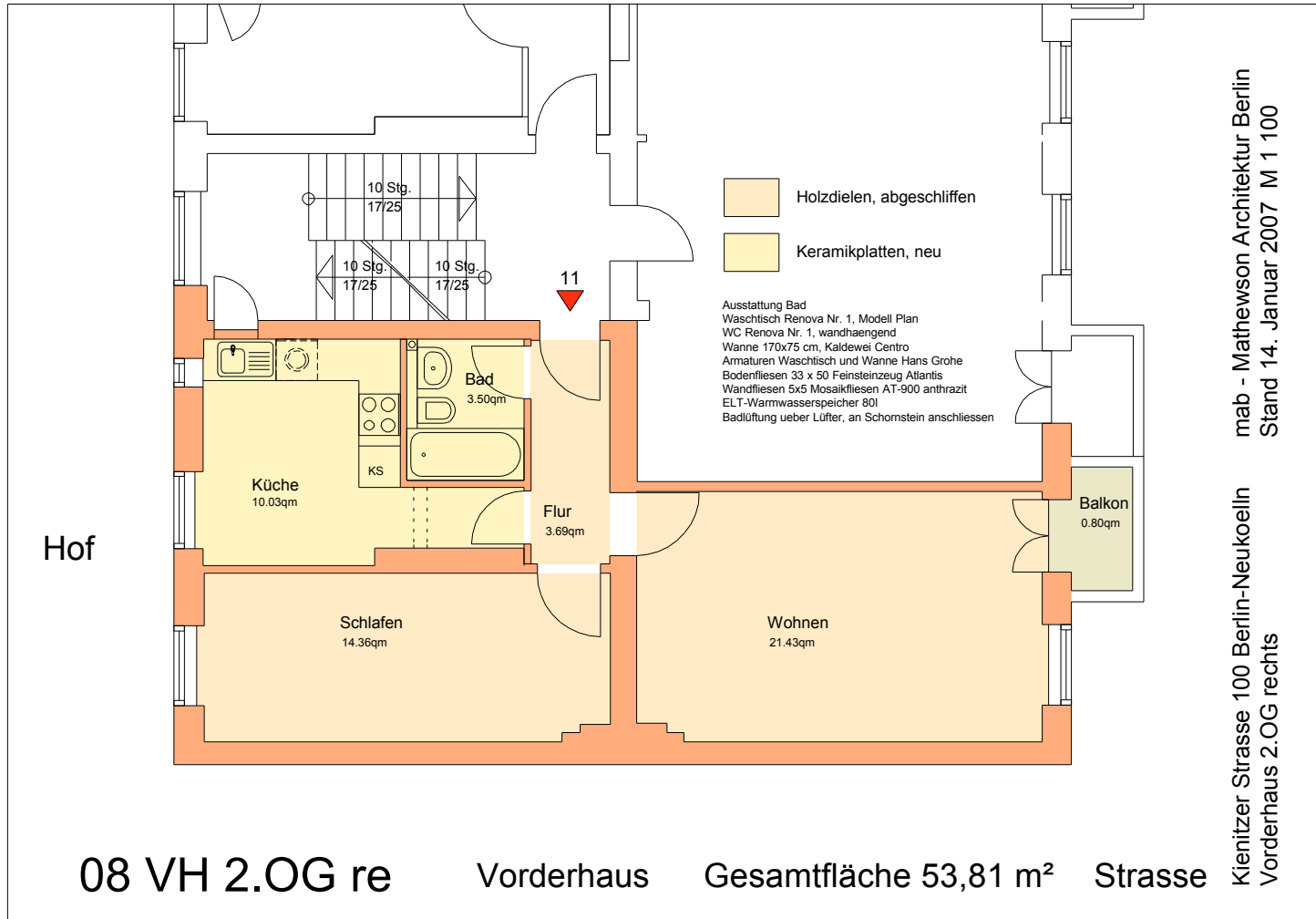


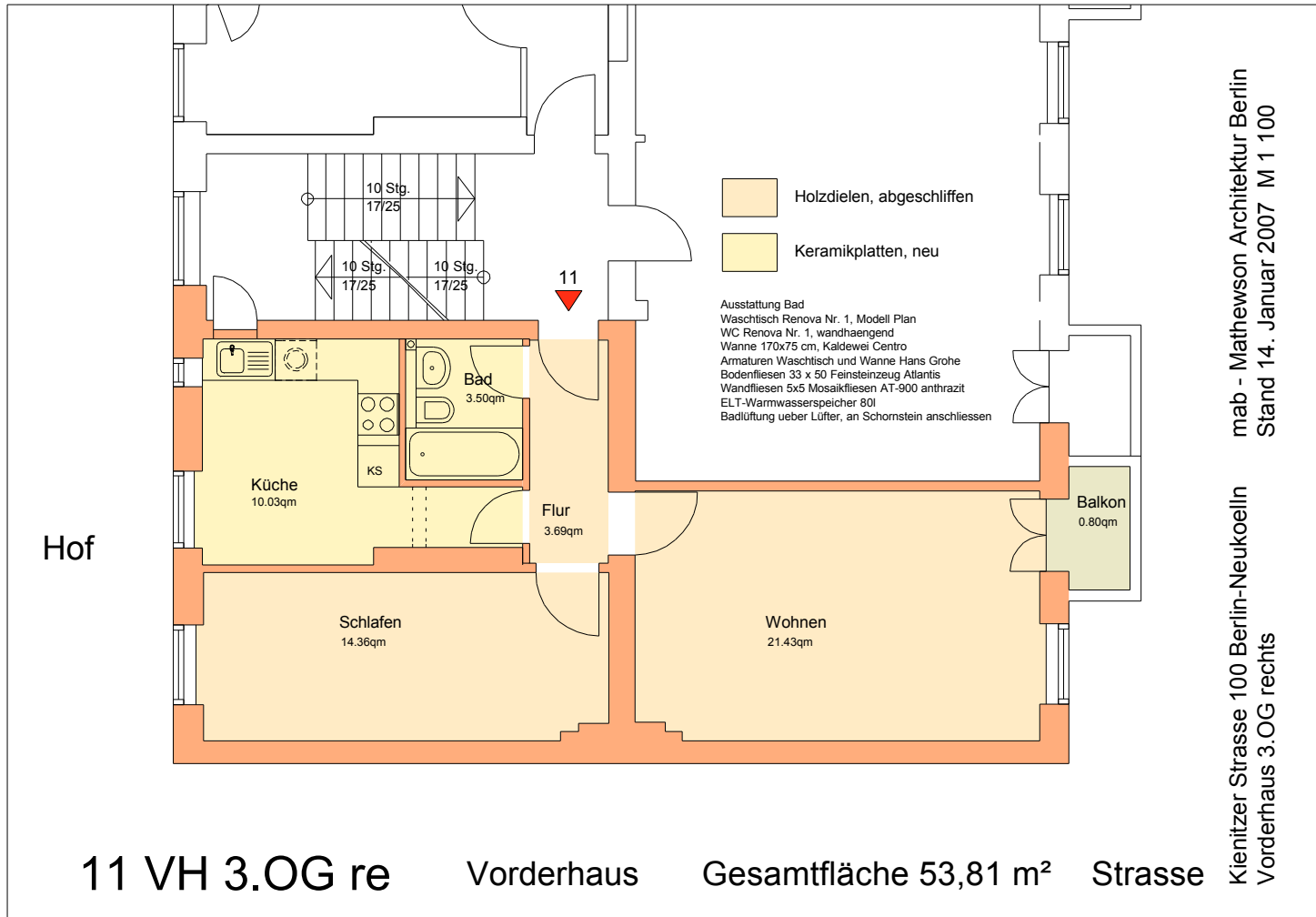
Kienitzer Strasse 100 Berlin-Neukölln
 Grundrisse vermietbare Wohneinheiten
 Stand: 14 Januar 2007

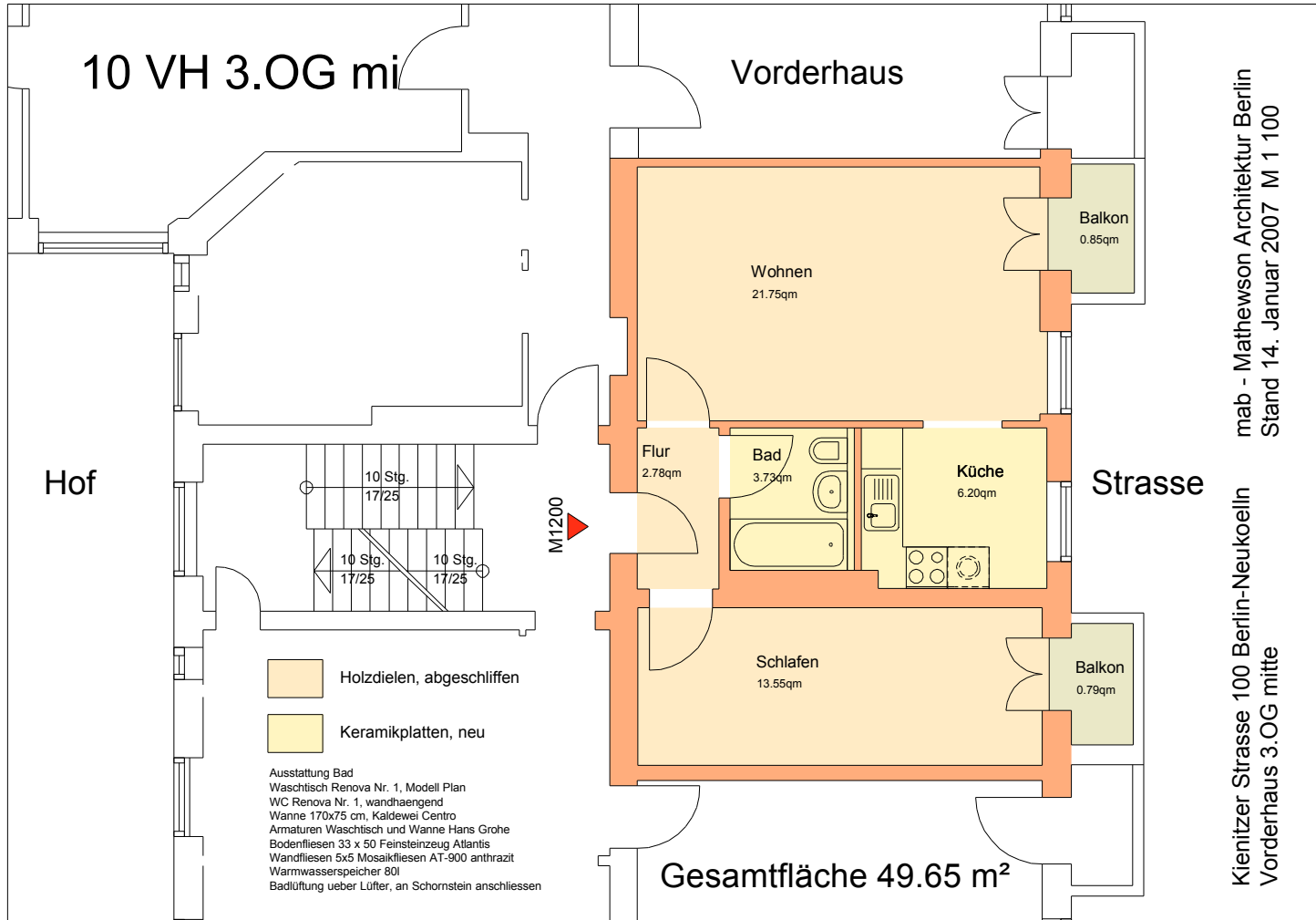






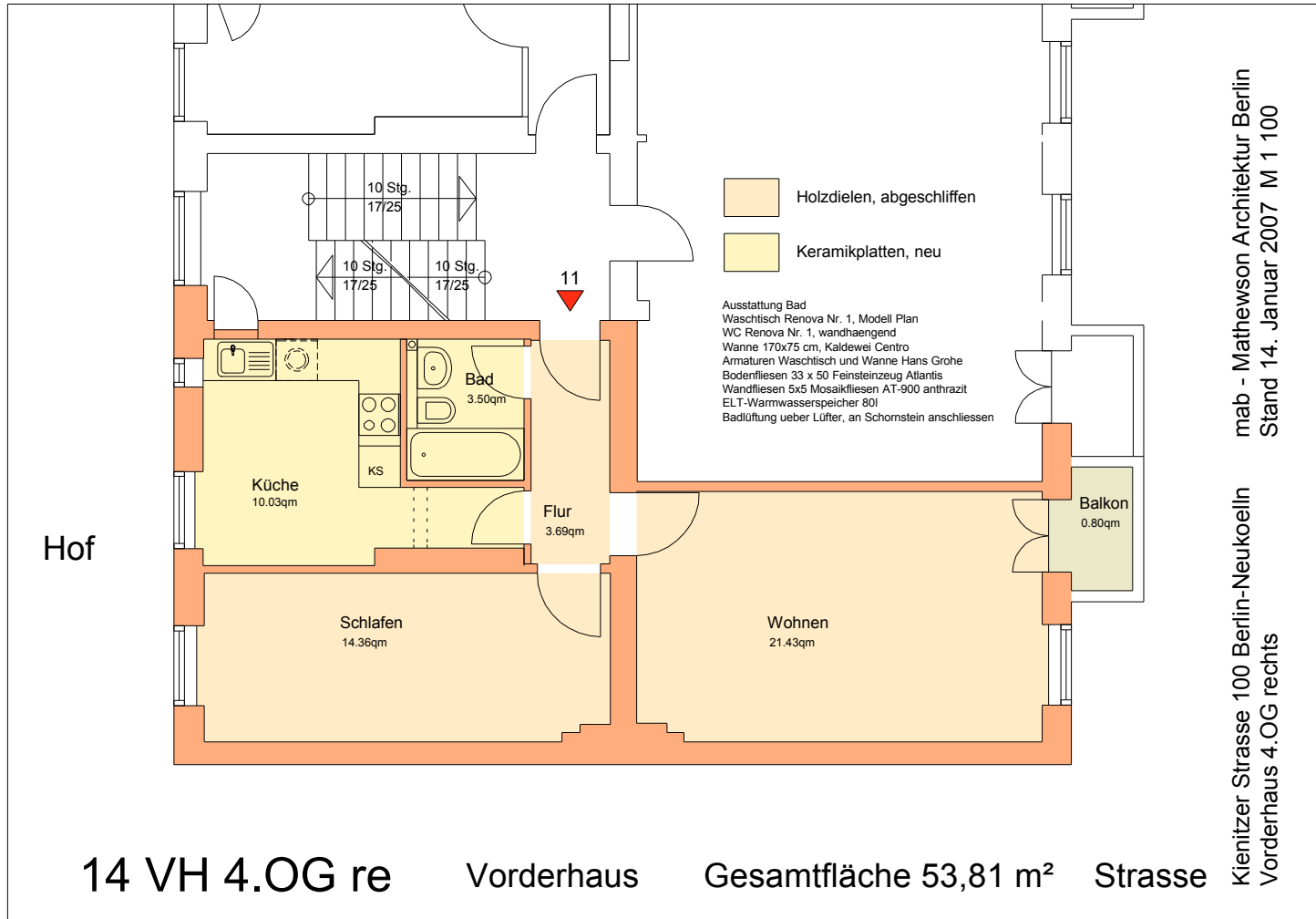


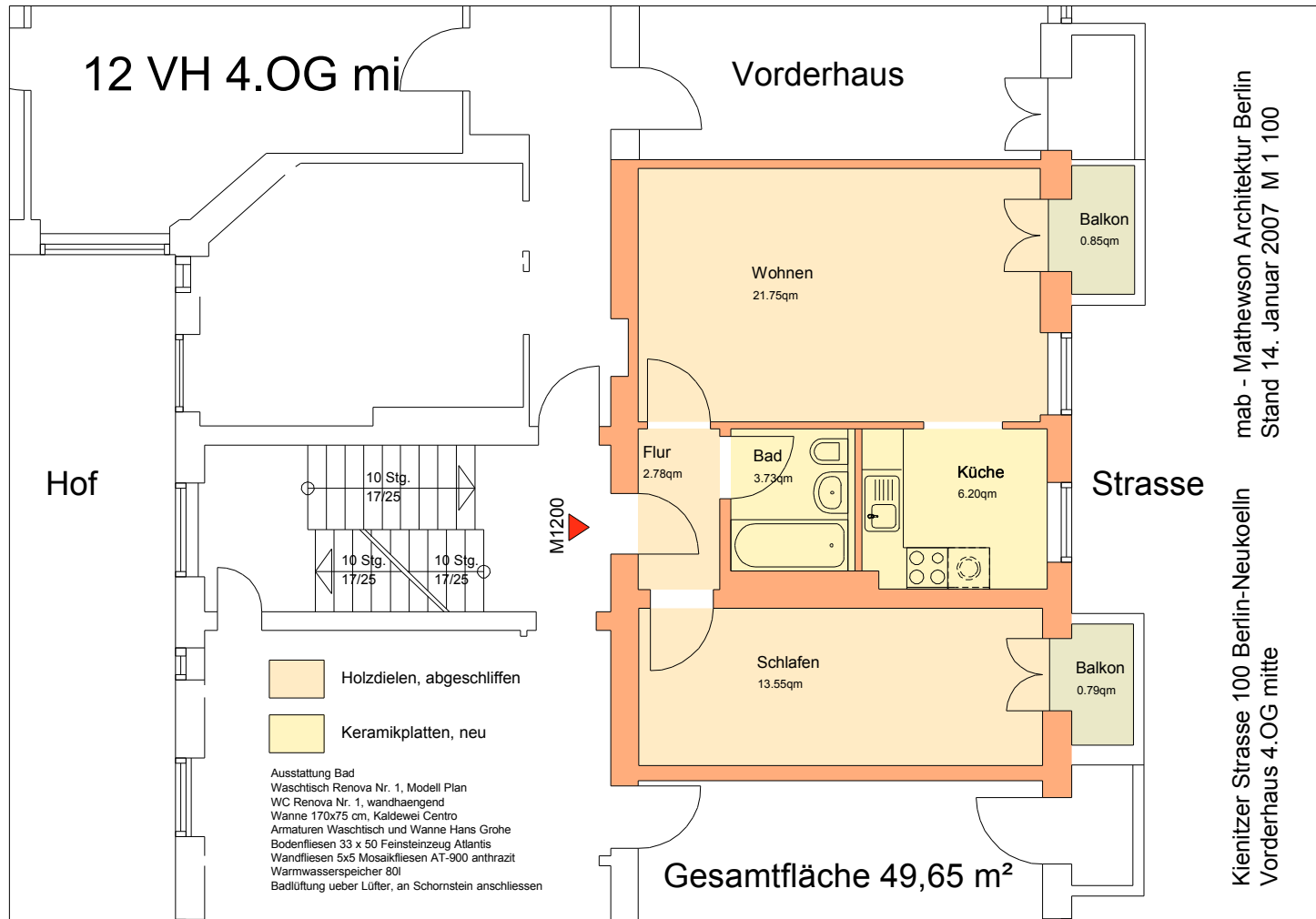


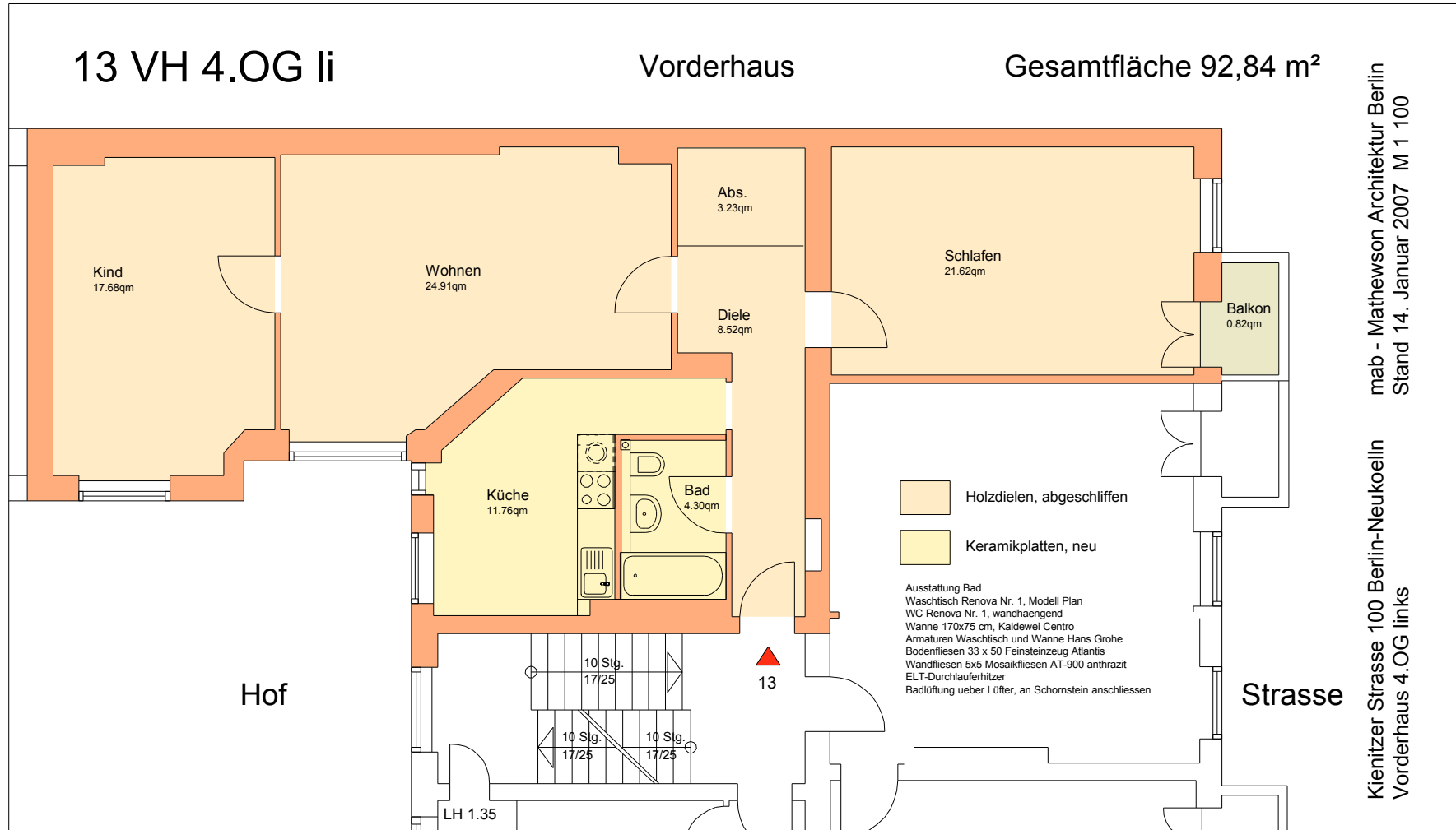


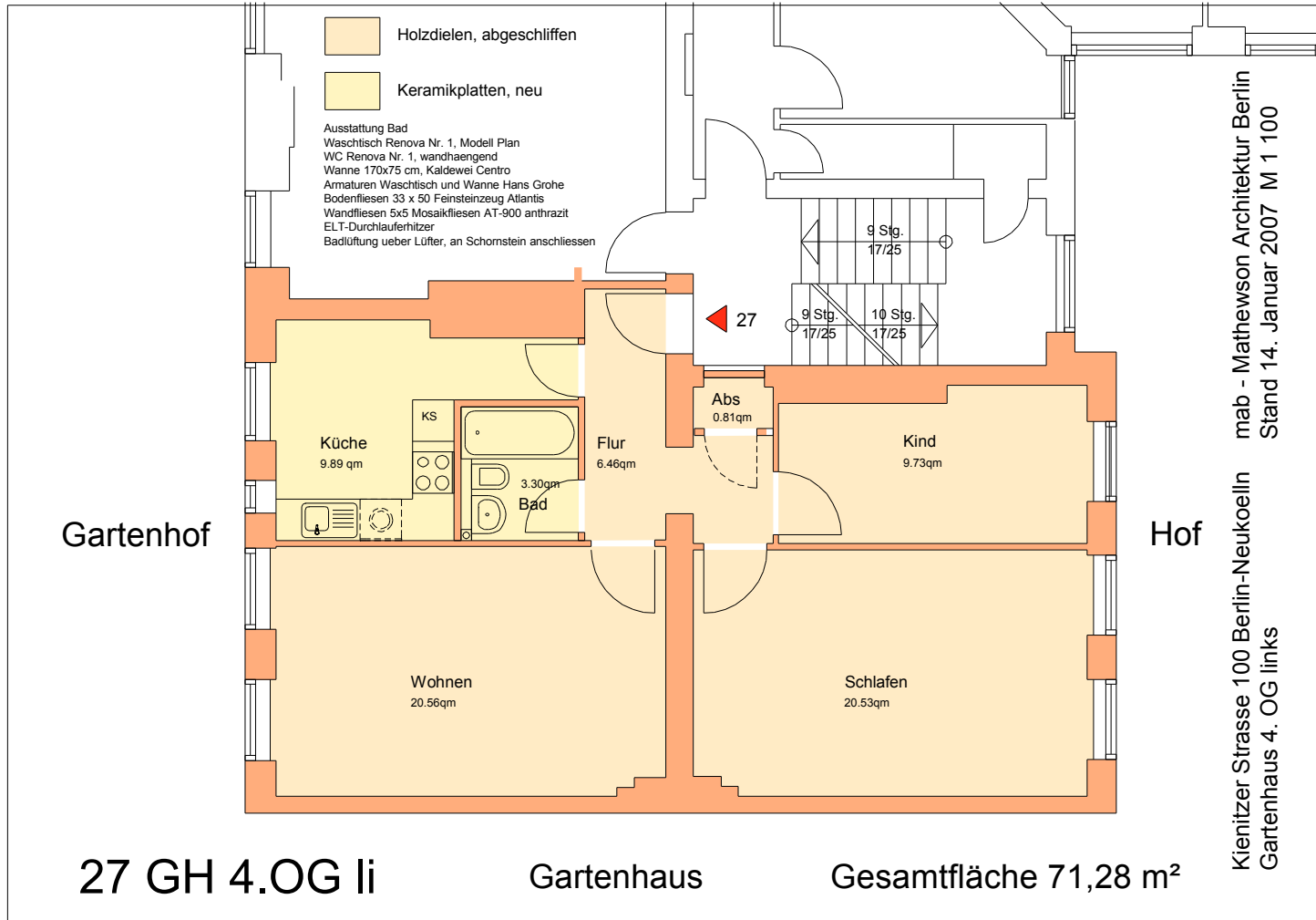
mab - Mathewson Architektur Berlin
 Stand 14. Januar 2007 M 1 100

Kienitzer Strasse 100 Berlin-Neukoelln
 Vorderhaus 3.OG mitte







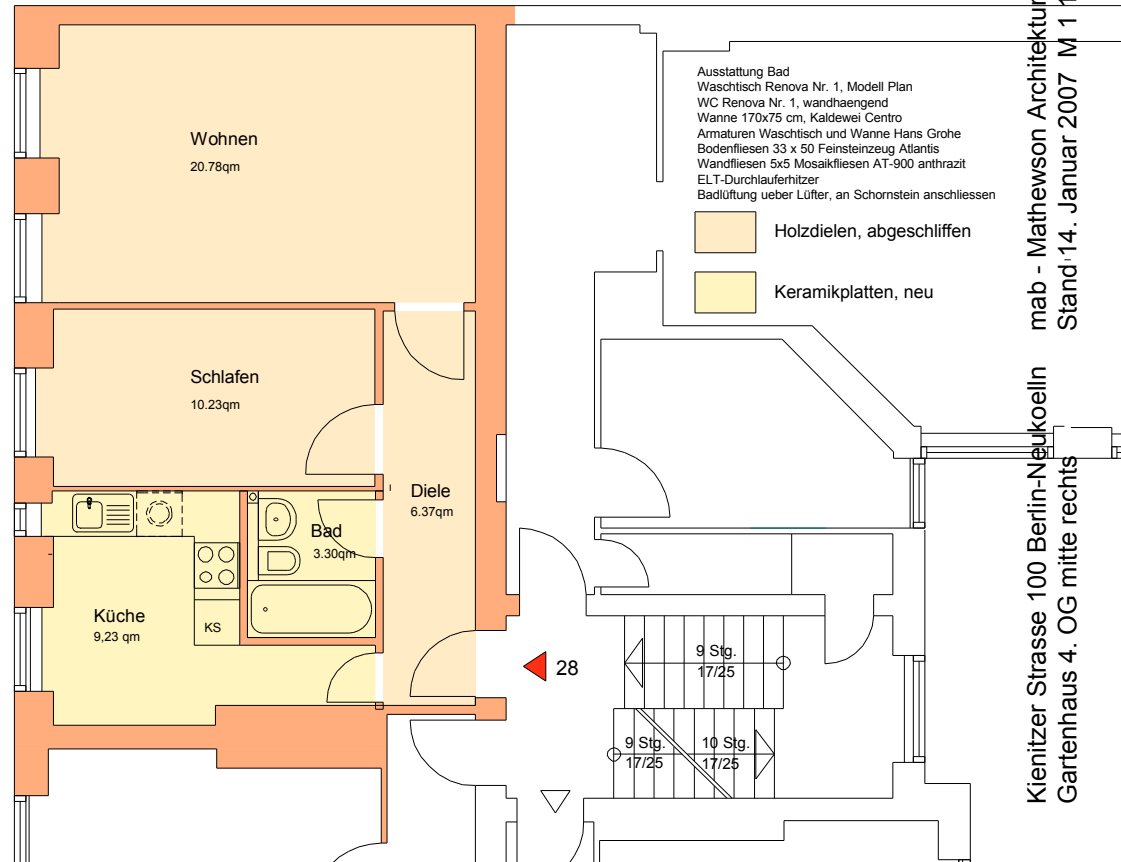


28 GH 4.OG mi

Gartenhaus

Gesamtfläche 49,91 m²

Gartenhof



mab - Mathewson Architektur Berlin
 Stand: 14. Januar 2007 M 1 100

Kienitzer Strasse 100 Berlin-Neukoelln
 Gartenhaus 4. OG mitte rechts

29 GH 4.OG re

Gartenhaus

Gesamtfläche 57,74 m²

